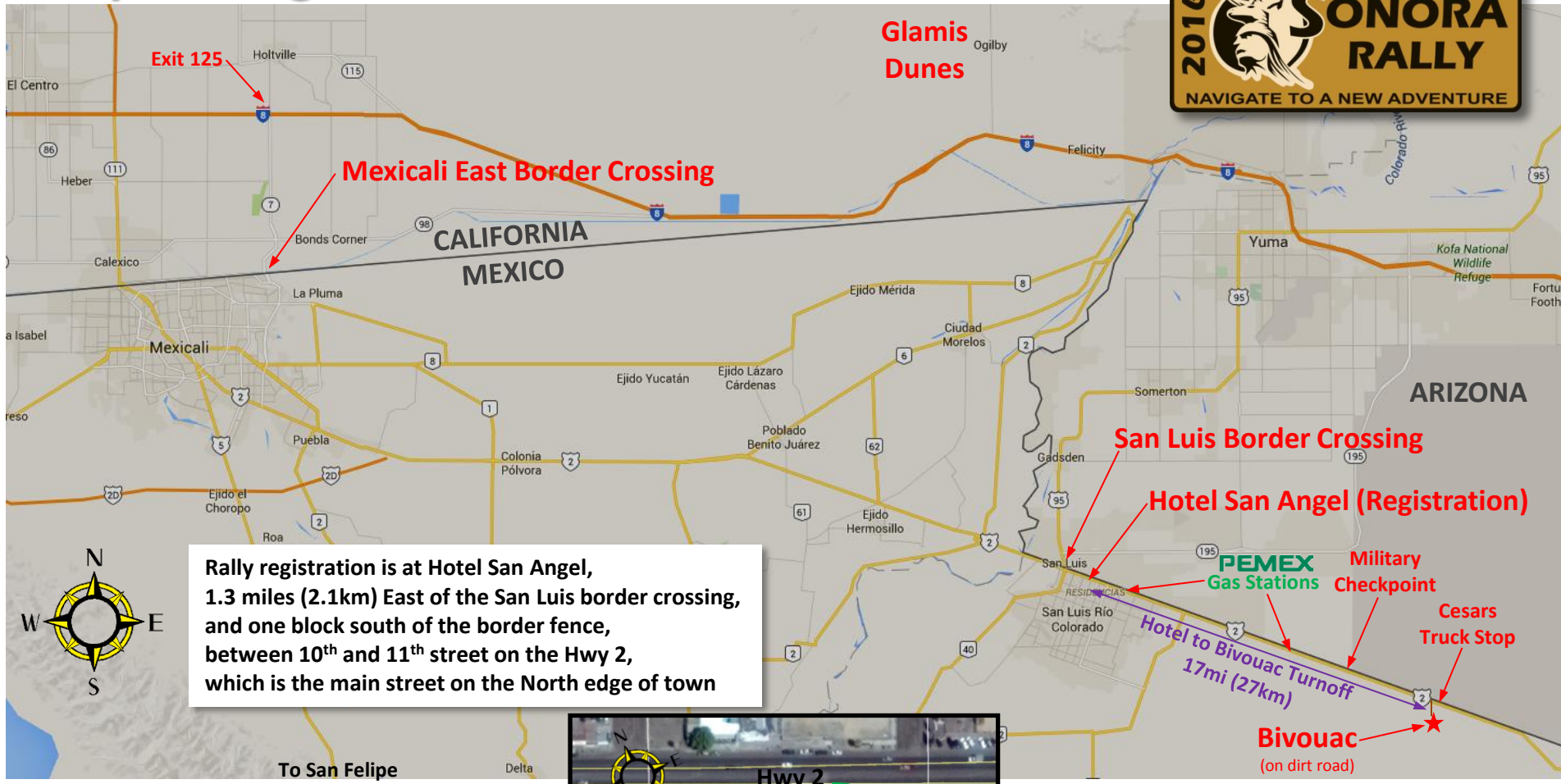


Map to Registration and San Luis Bivouac



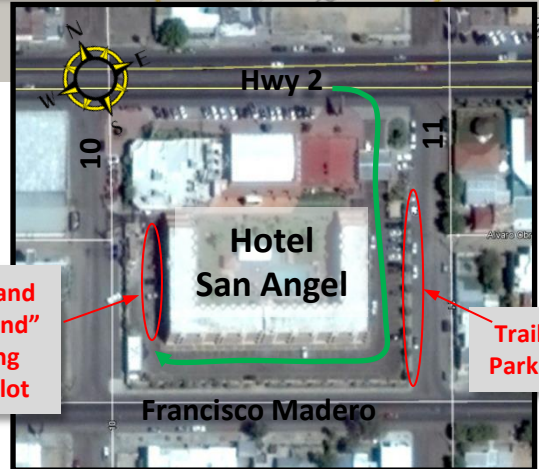
Rally registration is at Hotel San Angel, 1.3 miles (2.1km) East of the San Luis border crossing, and one block south of the border fence, between 10th and 11th street on the Hwy 2, which is the main street on the North edge of town



Primary crossing – Use San Luis crossing, from Yuma take Hwy 95 South to San Luis.

Alternate crossing - Use Mexicali East crossing. Exit 125 off Interstate 8 - Head south on HWY 7 to Mexicali East Border (about 7 miles).

Malle Moto and "leave it behind" truck parking inside hotel lot



Trailer Parking



GPS: 32° 28.765'N
114° 46.200'W